

Radiology Quiz

A 72 years old male presented with complaints of left sided loss of vision for 6 months and left eye ptosis for 2 months. Patient was having no nasal complaints. Clinically non-responsive to steroids and antifungals.



Fig. 1

These are the coronal and axial section of contrast enhanced MRI and CT scan of paranasal sinuses showing enhancing mass in right side posterior ethmoids and sphenoid sinus with involvement of orbital apex.

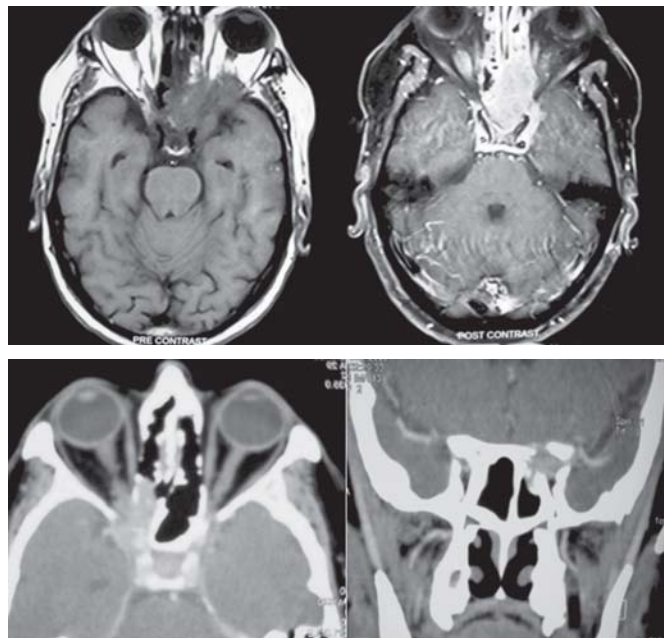


Fig. 2

Send your diagnosis and comments on management to:

Editor-in-Chief

Room No. 25, Block D, Level 2

Faculty Offices, Nehru Hospital

Postgraduate Institute of Medical Education and

Research, Chandigarh-160012, India

e-mail: clinrhinol@gmail.com

Answer of last quiz: Nasopharyngeal schwannoma

Entries received-24

Correct entry-1